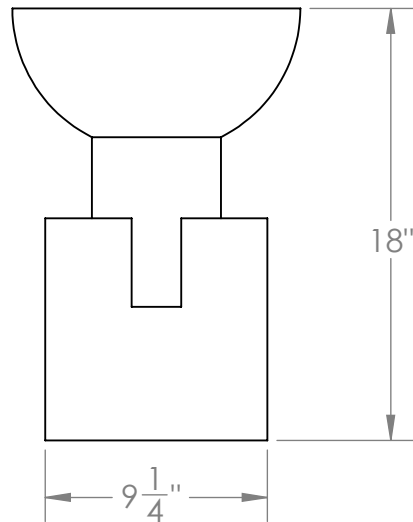
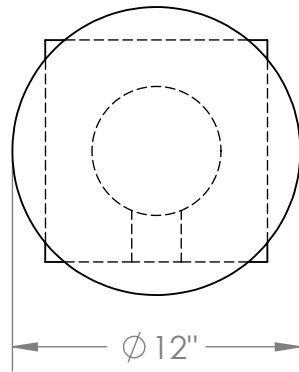


# BLOCK SIDE TABLE



Made of cold rolled steel, the table is finished in a light antique brass with a dark antique brass block base. The contrasting finishes accentuate the interlocking shapes.



## Materials

Steel

## Standard Finishes

Light Antique Brass  
 Dark Antique Brass  
 Light Antique Nickel  
 Dark Antique Nickel

## Dimensions

12" W x 18" H x 12" D

## Notes

## Retail

\$6,000

## Lead Time

8-10 Weeks

**Customization** Available - please contact us. **Weight** ~15 lbs