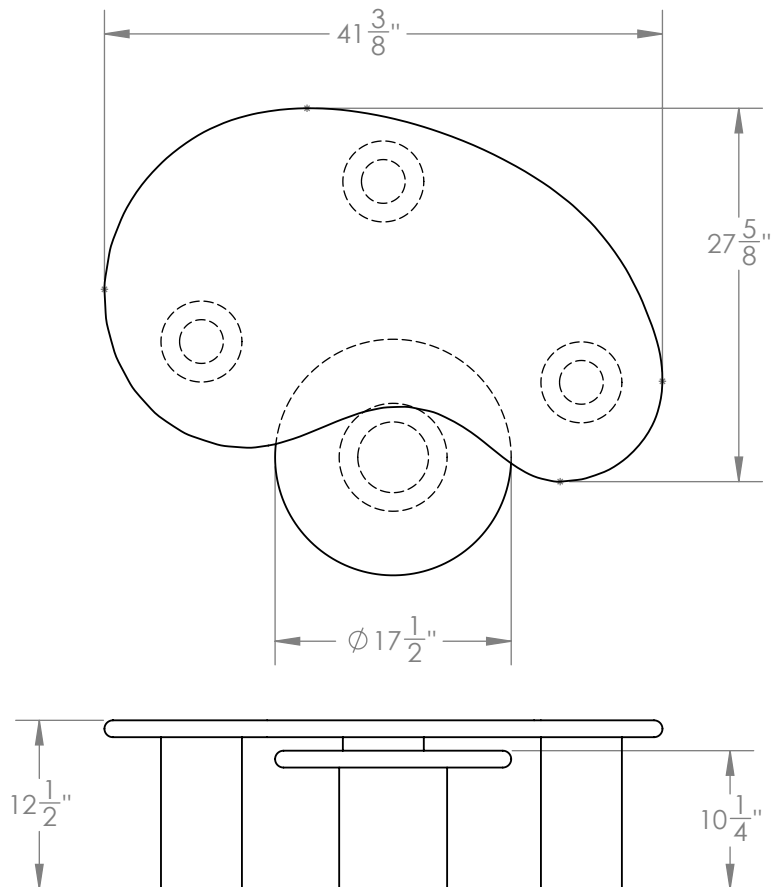


# PUDDLE - TRAVERTINE



Made from carved Travertine, these tables nest perfectly and can be moved individually to suit the space.

## Materials

Travertine

## Standard Finishes

Unfilled, Honed

## Dimensions

Table 1: 41- $\frac{3}{8}$ " W x 12- $\frac{1}{2}$ " H x 27- $\frac{5}{8}$ " D

Table 2: 17- $\frac{1}{2}$ " W x 10- $\frac{1}{4}$ " H x 17- $\frac{1}{2}$ " D

## Notes

Travertine is a natural material and therefore variations in tone and striation are to be expected.

## Retail

\$14,750

## Lead Time

8-10 Weeks

**Customization** Available - please contact us. **Weight** ~150 lbs (large)  
~50 lbs (small)