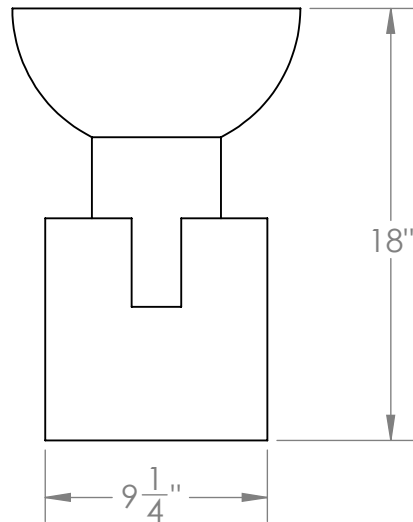
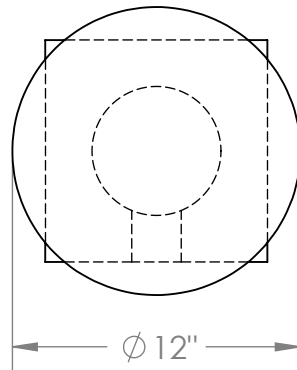


BLOCK SIDE TABLE, STANDARD



Made of cold rolled steel, the table is finished in a light antique brass with a dark antique brass block base. The contrasting finishes accentuate the interlocking shapes.



Materials

Steel
Wood

Standard Finishes

Light Antique Brass + Dark Antique Brass
Light Antique Nickel + Dark Antique Nickel
Ash
Ebonized Oak
White Oak

Dimensions

12" W x 18" H x 12" D

Retail

Metal: \$5,250
Wood: \$6,500

Lead Time

8-10 Weeks

Customization Available - please contact us. **Weight** ~15 lbs