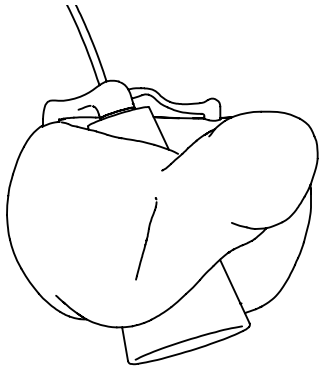


# SQUIDGE TABLE LAMP



Crystal clear molten glass is poured into a graphite mold to create the sculptural body of the lamp, which is pierced by a hand-blown white glass cone and mounted to a bronze armature.

## Materials

Glass  
Steel  
Brass

## Standard Finishes

Clear Cast Glass  
White Handblown Glass  
Sulfur Bronze

## Dimensions

16- $\frac{1}{4}$ " H x 9- $\frac{1}{2}$ " W x 8- $\frac{7}{8}$ " D  
Inline dimmer: 2- $\frac{3}{8}$ " x 2- $\frac{3}{8}$ " x 2"

## Notes

Lamping: 1 G9 bulb, max 75W. 4.5W dimmable LED bulb included. 450 lumens, 2700K color temperature.  
120V, UL approved. (240V available)  
120V/240V. Specify voltage and plug type.  
Includes 84" cord, with inline dimmer 24" from fixture.

## Retail

\$9,250

## Lead Time

10-12 Weeks

**Customization** Available - please contact us. **Weight** ~25 lbs

